

The PHD3Y hydraulic motor is a premium solution for demanding applications. It features a low operating speed, but delivers powerful torque output. With its high efficiency design, the PHD3Y is capable of providing long service life and reliable performance. The motor also has a broad speed range, allowing it to adapt to a variety of operating conditions.

The PHD3Y's robust starting torque makes it well suited for challenging starting loads, while its stable rotation at high speeds makes it ideal for high-performance applications. Additionally, the compact and lightweight design of the PHD3Y hydraulic motor makes it an excellent choice for applications where space and weight are a concern. The PHD3Y hydraulic motor is engineered to deliver smooth and consistent operation. It is equipped with advanced features such as precision-machined components and high-quality seals, which help to minimize wear and extend the life of the motor. The motor's unique design also ensures that it operates quietly and with minimal vibration, even under heavy loads. This makes it an excellent choice for use in sensitive applications, where quiet operation and reduced vibration levels are important.

MAIN SPECIFICATIONS

		PHD3Y PHD3SY PHD3S3Y PHD3WY 80	PHD3Y PHD3SY PHD3S3Y PHD3WY 100	PHD3Y PHD3SY PHD3S3Y PHD3WY 125	PHD3Y PHD3SY PHD3S3Y PHD3WY 160	PHD3Y PHD3SY PHD3S3Y PHD3WY 200	PHD3Y PHD3SY PHD3S3Y PHD3WY 250	PHD3Y PHD3SY PHD3S3Y PHD3WY 315	PHD3Y PHD3SY PHD3S3Y PHD3WY 400	PHD3Y PHD3SY PHD3S3Y PHD3WY 500
Displacement	ml/r cc [in ³ ./rev.]	80.5 [4.91]	100.5 [6.13]	126.3 [7.71]	160.8 [9.81]	200.9 [12.26]	252.6 [15.41]	321.5 [19.62]	401.9 [24.52]	476.5 [29.08]
Max.Pressure.Drop	cont. bar [psi]	205 [2973]	205 [2973]	205 [2973]	205 [2973]	205 [2973]	200 [2900]	200 [2900]	155 [2248]	120 [1740]
	int. bar [psi]	275 [3988]	275 [3988]	275 [3988]	260 [3770]	250 [3625]	250 [3625]	240 [3480]	190 [2755]	140 [2030]
	peak. bar [psi]	295 [4278]	295 [4278]	295 [4278]	280 [4061]	270 [3916]	270 [3916]	260 [3770]	210 [3045]	160 [2320]
Max.Torque	cont. n.m [Lb.in]	226 [2000]	282 [2495]	355 [3142]	451 [3991]	564 [4991]	684 [6053]	870 [7700]	813 [7195]	728 [6443]
	int. n.m [Lb.in]	293 [2593]	365 [3230]	459 [4062]	559 [4947]	672 [5947]	845 [7478]	1032 [9133]	1021 [9036]	903 [7992]
	peak. n.m [Lb.in]	306 [2708]	383 [3389]	481 [4257]	588 [5204]	708 [6266]	891 [7886]	1091 [9656]	1141 [10098]	1044 [9240]
Max.Speed	cont. r/min	805	745	590	465	370	295	230	185	155
Max.Flow	cont. L/min [G/min]	65 [17.17]	75 [19.81]	75 [19.81]	75 [19.81]	75 [19.81]	75 [19.81]	75 [19.81]	75 [19.81]	75 [19.81]
Max.Output.Power	cont. kw [hp]	16 [21.45]	18 [24.14]	18 [24.14]	18 [24.14]	18 [24.14]	18 [24.14]	17 [22.79]	11 [14.75]	9 [12.07]
Weight	kg [lbs]	9.8 [21.60]	10.0 [22.04]	10.3 [22.70]	10.7 [23.59]	11.1 [24.47]	11.6 [25.57]	12.3 [27.12]	13.2 [29.10]	14.3 [31.53]

- Rated speed and rated torque: Output value of speed and torque under rated flow and rated pressure.
- Continuous pressure: Max. value of operating motor continuously.
- Intermittent pressure: Max. value of operating motor in 6 seconds per minute.
- Peak pressure: Max. value of operating motor in 0.6 second per minute.



PERFORMANCE DATA

PHD3Y 80(80.5cc)

		[507]	[1015]	[1522]	[2030]	[2538]	[2973]	[3263]	[PSI]
		35	70	105	140	175	205	225	BAR
[GPM]	[3.96]	[309]	[663]	[1008]	[1327]	[1655]	[1947]	[2115]	
	15	35	75	114	150	187	220	239	
L/min	[7.92]	[309]	[663]	[1017]	[1345]	[1681]	[1964]	[2124]	
	30	363	355	346	340	330	322	310	TORQUE [LB-IN] TORQUE N·M SPEED RPM
Flow	[10.56]	[292]	[663]	[1017]	[1371]	[1708]	[2000]	[2124]	
	40	485	479	464	453	444	437	415	
Flow	[13.21]	[265]	[646]	[1000]	[1354]	[1681]	[1973]	[2097]	
	50	610	602	594	580	565	556	530	
Flow	[15.85]	[247]	[619]	[973]	[1327]	[1663]	[1947]	[2079]	
	60	735	724	714	698	680	670	642	
Max cont.	[17.17]	[238]	[601]	[955]	[1309]	[1646]	[1902]	[2062]	Max cont.
	65	801	790	775	760	742	727	704	
Max int.	[21.13]	[203]	[584]	[920]	[1239]	[1557]	[1814]	[1885]	Max int.
	80	988	975	955	938	915	897	870	

PHD3Y 100(100.5cc)

		[507]	[1015]	[1522]	[2030]	[2538]	[2973]	[3263]	[PSI]
		35	70	105	140	175	205	225	BAR
[GPM]	[3.96]	[389]	[831]	[1256]	[1655]	[2062]	[2433]	[2637]	
	15	44	94	142	187	233	275	298	
L/min	[7.92]	[371]	[823]	[1274]	[1681]	[2097]	[2460]	[2655]	
	30	291	284	277	272	264	258	248	TORQUE [LB-IN] TORQUE N·M SPEED RPM
Flow	[10.56]	[362]	[814]	[1274]	[1717]	[2133]	[2495]	[2655]	
	40	388	384	372	363	356	350	332	
Flow	[13.21]	[327]	[805]	[1247]	[1690]	[2097]	[2460]	[2619]	
	50	489	482	476	465	453	445	425	
Flow	[15.85]	[309]	[770]	[1212]	[1655]	[2079]	[2416]	[2593]	
	60	589	580	572	559	545	537	514	
Max cont.	[19.81]	[300]	[752]	[1194]	[1637]	[2053]	[2372]	[2575]	Max cont.
	75	740	730	716	702	686	672	651	
Max int.	[23.77]	[256]	[725]	[1150]	[1548]	[1964]	[2283]	[2354]	Max int.
	90	890	879	861	845	825	808	784	

PHD3Y 125(126.3cc)

		[507]	[1015]	[1522]	[2030]	[2538]	[2973]	[3263]	[PSI]
		35	70	105	140	175	205	225	BAR
[GPM]	[3.96]	[477]	[1035]	[1584]	[2079]	[2593]	[3080]	[3319]	
	15	54	117	179	235	293	348	375	
L/min	[7.92]	[486]	[1044]	[1593]	[2106]	[2637]	[3106]	[3336]	
	30	231	226	221	217	210	205	198	TORQUE [LB-IN] TORQUE N·M SPEED RPM
Flow	[10.56]	[477]	[1062]	[1593]	[2150]	[2681]	[3142]	[3336]	
	40	309	305	296	289	283	279	265	
Flow	[13.21]	[451]	[1044]	[1566]	[2124]	[2637]	[3106]	[3292]	
	50	389	384	379	370	360	354	338	
Flow	[15.85]	[424]	[1008]	[1531]	[2079]	[2610]	[3071]	[3265]	
	60	468	461	455	445	433	427	409	
Max cont.	[19.81]	[371]	[964]	[1442]	[2063]	[2584]	[3026]	[3239]	Max cont.
	75	589	581	570	559	546	535	518	
Max int.	[23.77]	[336]	[911]	[1442]	[1947]	[2469]	[2894]	[2956]	Max int.
	90	708	699	685	673	656	643	624	

PHD3Y 160(160.8cc)

		[507]	[1015]	[1522]	[2030]	[2538]	[2973]	[3263]	[PSI]
		35	70	105	140	175	205	225	BAR
[GPM]	[3.96]	[619]	[1301]	[2017]	[2655]	[3310]	[3929]	[4221]	
	15	70	147	228	300	374	444	477	
L/min	[7.92]	[637]	[1327]	[2035]	[2690]	[3363]	[3956]	[4239]	
	30	72	150	230	304	380	447	479	TORQUE [LB-IN] TORQUE N·M SPEED RPM
Flow	[10.56]	[654]	[1336]	[2035]	[2743]	[3416]	[3991]	[4239]	
	40	243	240	232	227	222	219	208	
Flow	[13.21]	[628]	[1301]	[2000]	[2708]	[3363]	[3956]	[4186]	
	50	305	301	297	290	283	278	265	
Flow	[15.85]	[601]	[1265]	[1947]	[2655]	[3327]	[3912]	[4151]	
	60	368	362	357	349	340	335	321	
Max cont.	[19.81]	[566]	[1221]	[1911]	[2619]	[3292]	[3867]	[4115]	Max cont.
	75	463	456	448	439	429	420	407	
Max int.	[23.77]	[531]	[1177]	[1840]	[2478]	[3115]	[3681]	[3761]	Max int.
	90	556	549	538	528	515	505	490	



PERFORMANCE DATA

PHD3Y 200(200.6cc)

		[507]	[1015]	[1522]	[2030]	[2538]	[2973]	[3263]	[PSI]
		35	70	105	140	175	205	225	BAR
[GPM]	[3.96]	[770]	[1628]	[2522]	[3310]	[4133]	[4929]	[5275]	Max cont.
	15	87	184	285	374	467	557	596	
L/min	[7.92]	[787]	[1655]	[2540]	[3354]	[4195]	[4956]	[5301]	Max cont.
	30	89	187	287	379	474	560	599	
Flow	[10.56]	[814]	[1655]	[2540]	[3425]	[4266]	[4991]	[5301]	Max cont.
	40	92	187	287	387	482	564	599	
Flow	[13.21]	[778]	[1610]	[2495]	[3380]	[4195]	[4956]	[5230]	Max cont.
	50	88	182	282	382	474	560	591	
Flow	[15.85]	[743]	[1548]	[2433]	[3310]	[4151]	[4912]	[5186]	Max cont.
	60	84	175	275	374	469	555	586	
Max cont.	[19.81]	[681]	[1504]	[2389]	[3265]	[4106]	[4867]	[5142]	Max cont.
	75	77	170	270	369	464	550	581	
Max int.	[23.77]	[601]	[1460]	[2301]	[3088]	[3841]	[4513]	[4708]	Max cont.
	90	68	165	260	349	434	510	532	

PHD3Y 250(252.6cc)

		[507]	[1015]	[1522]	[2030]	[2538]	[2900]	[3263]	[PSI]
		35	70	105	140	175	200	225	BAR
[GPM]	[3.96]	[1008]	[2071]	[3168]	[4151]	[5168]	[5991]	[6567]	Max cont.
	15	114	234	358	469	584	677	742	
L/min	[7.92]	[1017]	[2079]	[3195]	[4168]	[5195]	[6018]	[6602]	Max cont.
	30	115	235	361	471	587	680	746	
Flow	[10.56]	[1017]	[2079]	[3142]	[4186]	[5230]	[6053]	[6646]	Max cont.
	40	115	235	355	473	591	684	751	
Flow	[13.21]	[1008]	[2035]	[3142]	[4195]	[5195]	[6018]	[6602]	Max cont.
	50	114	230	355	474	587	680	746	
Flow	[15.85]	[991]	[1991]	[3115]	[4168]	[5159]	[5974]	[6558]	Max cont.
	60	112	225	352	471	583	675	741	
Max cont.	[19.81]	[964]	[1949]	[3088]	[4133]	[5115]	[5921]	[6505]	Max cont.
	75	109	220	349	467	578	669	735	
Max int.	[23.77]	[911]	[1885]	[3035]	[4071]	[5027]	[5788]	[6328]	Max cont.
	90	103	213	343	460	568	654	715	

PHD3Y 315(321.5cc)

		[507]	[1015]	[1522]	[2030]	[2538]	[2900]	[3263]	[PSI]
		35	70	105	140	175	200	225	BAR
[GPM]	[3.96]	[1239]	[2513]	[3832]	[5159]	[6593]	[7638]	[8381]	Max cont.
	15	140	284	433	583	745	863	947	
L/min	[7.92]	[1239]	[2549]	[3867]	[5186]	[6620]	[7664]	[8417]	Max cont.
	30	140	288	437	586	748	866	951	
Flow	[10.56]	[1221]	[2566]	[3894]	[5204]	[6655]	[7700]	[8461]	Max cont.
	40	138	290	440	588	752	870	956	
Flow	[13.21]	[1203]	[2575]	[3885]	[5195]	[6620]	[7664]	[8417]	Max cont.
	50	136	291	439	587	748	866	951	
Flow	[15.85]	[1186]	[2531]	[3850]	[5159]	[6584]	[7629]	[8381]	Max cont.
	60	134	286	435	583	744	862	947	
Max cont.	[19.81]	[1159]	[2478]	[3814]	[5133]	[6531]	[7576]	[8310]	Max cont.
	75	131	280	431	580	738	856	939	
Max int.	[23.77]	[1106]	[2407]	[3726]	[5044]	[6354]	[7310]	[7956]	Max cont.
	90	125	272	421	570	718	826	899	

PHD3Y 400(401.9cc)

		[507]	[1015]	[1522]	[2030]	[2248]	[2538]	[PSI]
		35	70	105	140	155	175	BAR
[GPM]	[3.96]	[1522]	[3071]	[4620]	[6239]	[7133]	[8195]	Max cont.
	15	172	347	522	705	806	926	
L/min	[7.92]	[1540]	[3097]	[4655]	[6266]	[7160]	[8231]	Max cont.
	30	174	350	526	708	809	930	
Flow	[10.56]	[1531]	[3115]	[4682]	[6284]	[7195]	[8275]	Max cont.
	40	173	352	529	710	813	935	
Flow	[13.21]	[1513]	[3097]	[4699]	[6284]	[7160]	[8231]	Max cont.
	50	171	350	531	710	809	930	
Flow	[15.85]	[1486]	[3035]	[4620]	[6239]	[7089]	[8178]	Max cont.
	60	168	343	522	705	801	924	
Max cont.	[19.81]	[1451]	[3000]	[4575]	[6195]	[7000]	[8107]	Max cont.
	75	164	339	517	700	791	916	
Max int.	[23.77]	[1416]	[2876]	[4451]	[6018]	[6779]	[7841]	Max cont.
	90	160	325	503	680	766	886	



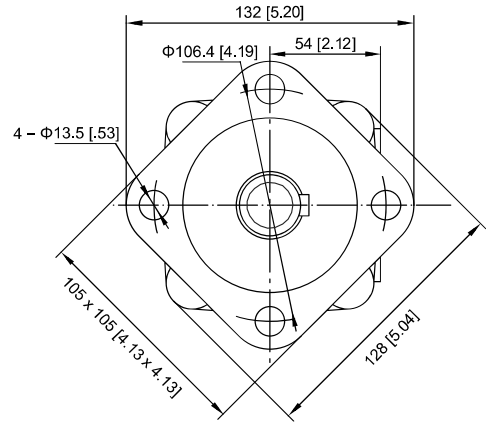
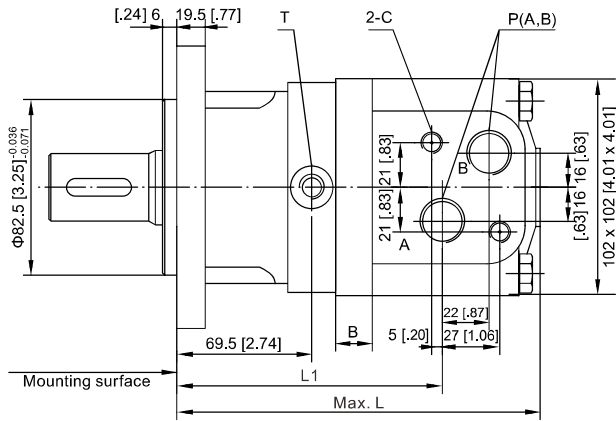
PERFORMANCE DATA

PHD3Y 500(476.5cc)

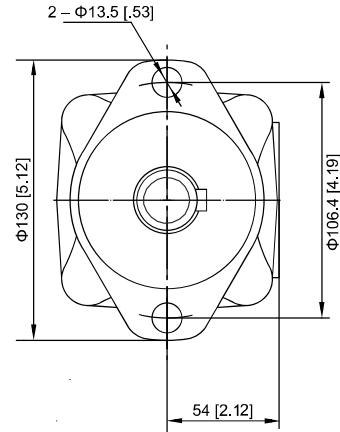
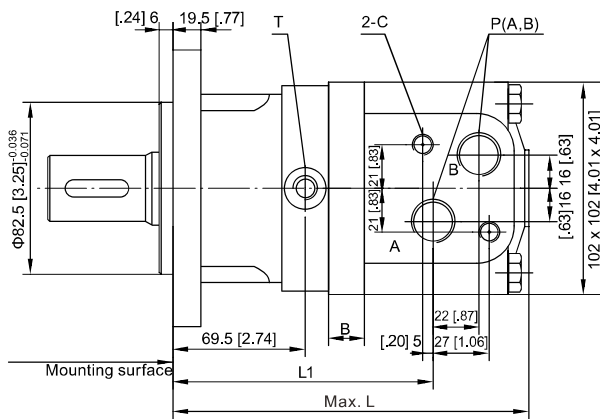
Max
cont. [507] [1015] [1522] [1740] [2030] [PSI]
140 BAR

	[3.96]	[1593]	[3566]	[5372]	[6381]	[7222]	
[GPM]	15	180	403	607	721	816	
L/min	15	31	30	29	28	27	
	[7.92]	[1619]	[3602]	[5425]	[6407]	[7293]	TORQUE [LB-IN]
	30	183	407	613	724	824	TORQUE N·M
	30	61	60	58	57	56	SPEED RPM
	[10.56]	[1637]	[3619]	[5460]	[6443]	[7363]	
	40	185	409	617	728	832	
	40	82	81	78	77	75	
	[13.21]	[1628]	[3593]	[5452]	[6407]	[7372]	
	50	184	406	616	724	833	
	50	103	102	100	98	95	
	[15.85]	[1610]	[3566]	[5390]	[6363]	[7248]	
	60	182	403	609	719	819	
	60	124	122	121	118	115	
	[19.81]	[1593]	[3549]	[5363]	[6301]	[7213]	
Max cont.	75	180	401	606	712	815	Max cont.
	75	156	154	151	148	145	
	[23.77]	[1531]	[3460]	[5319]	[6213]	[7107]	
Max int.	90	173	391	601	702	803	Max int.
	90	188	185	182	178	174	

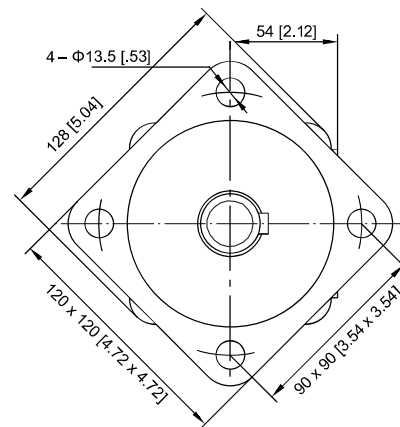
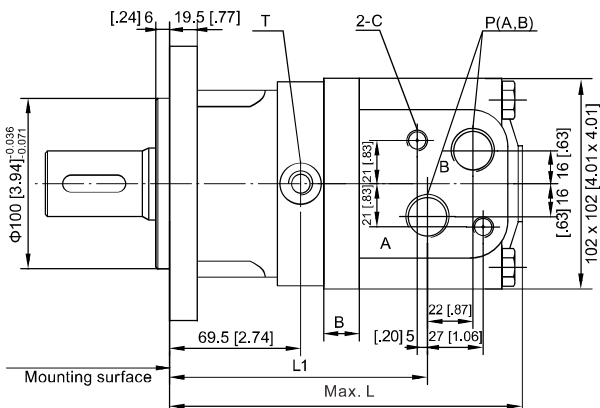
A1 : Square Flange



A2 : 2-Hole Oval Flange

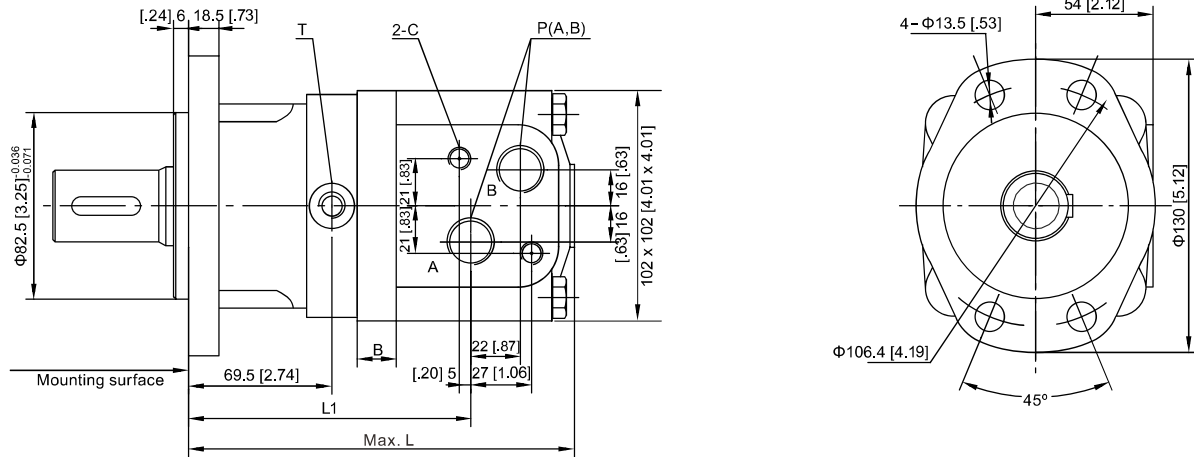


A3 : Square Flange



DIMENSIONS AND MOUNTING

A4 : 4-Hole Oval Flange



PHD3Y

	PHD3Y 80	PHD3Y 100	PHD3Y 125	PHD3Y 160	PHD3Y 200	PHD3Y 250	PHD3Y 315	PHD3Y 400	PHD3Y 500
L	170 [6.69]	173.5 [6.83]	178 [7.01]	184 [7.24]	191 [7.52]	200 [7.87]	212 [8.35]	226 [8.89]	239 [9.41]
L1	125.5 [4.94]	129 [5.08]	133.5 [5.25]	139.5 [5.49]	146.5 [5.77]	155.5 [6.12]	167.5 [6.59]	181.5 [7.14]	194.5 [7.66]
B	11 [.43]	14.5 [.57]	19 [.75]	25 [.98]	32 [1.26]	41 [1.61]	53 [2.08]	67 [2.64]	80 [3.15]



DIMENSIONS AND MOUNTING

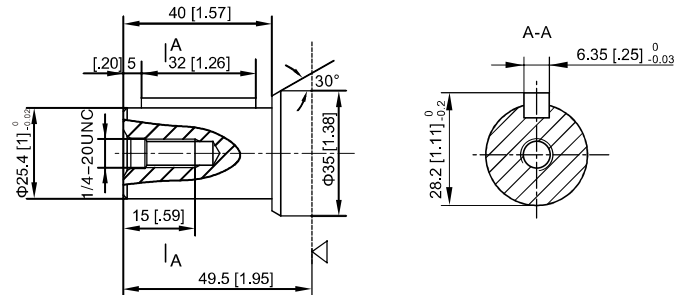
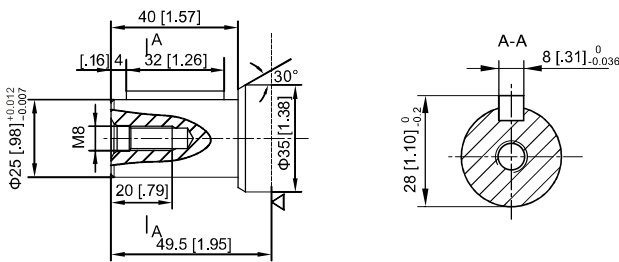
PHD3Y

Port Codes	Ports (A,B)	Mounting Thread (C)	Drain Connection (T)
Y	G1/2 (15)	M10 (12)	G1/4 (12)
Y1	M18 x 1.5 (15)	M10 (12)	M14 x 1.5 (12)
Y2	M22 x 1.5 (15)	M10 (12)	M14 x 1.5 (12)
Y3	M20 x 1.5 (15)	M10 (12)	M14 x 1.5 (12)
Y5	7/8-14UNF (15)	—	7/16-20 UNF(12)
Y8	NPT1/2 (15)	M10 (12)	G1/4 (12)
Y10	G1/2 (15)	—	G1/4 (12)

Note:P(A, B)---Ports, C---Mounting Thread (—Indicates no this thread) , T---Drain connettion

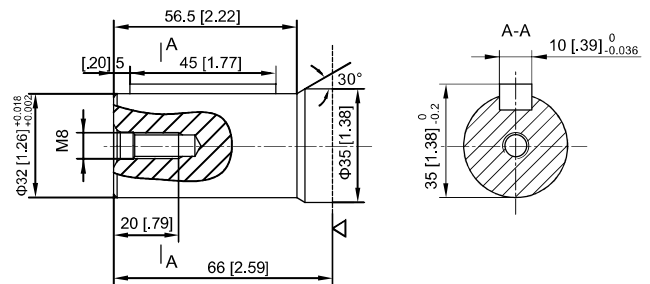
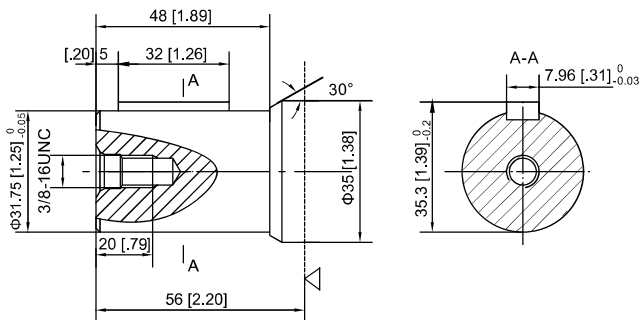
P1 : Φ [.98] Cylindrical shaft, parallel key [.31] x [.27] x [1.26]
 Φ 25 Cylindrical shaft, parallel key 8 x 7 x 32

P3 : Φ [1] Cylindrical shaft, parallel key [.25] x [.25] x [1.26]
 Φ 25.4 Cylindrical shaft, parallel key 6.35 x 6.35 x 32



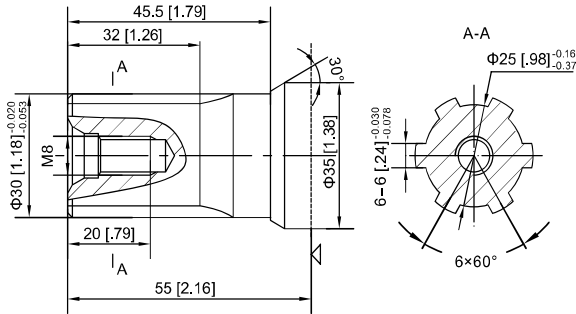
P5 : Φ [1.25] Cylindrical shaft, parallel key [.31] x [.31] x [1.26]
 Φ 31.75 Cylindrical shaft, parallel key 7.96 x 7.96 x 32

P10 : Φ [1.26] Cylindrical shaft, parallel key [.39] x [.31] x [1.77]
 Φ 32 Cylindrical shaft, parallel key 10 x 8 x 45

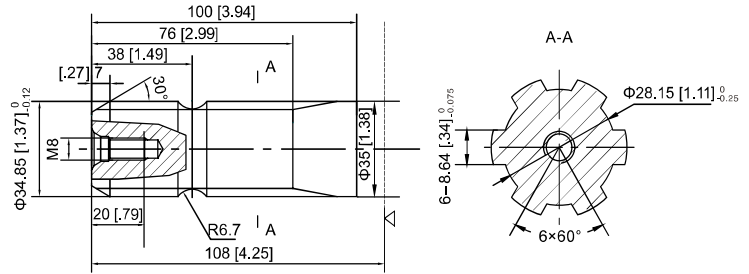


DIMENSIONS AND MOUNTING

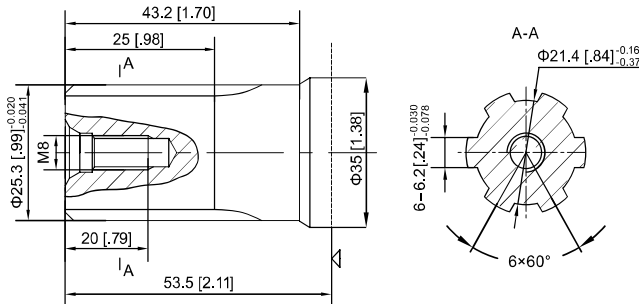
H1 : Φ [1.18] Splined shaft, 6 – [1.18] x [.98] x [.24]
 Φ 30 Splined shaft, 6–30 x 25 x 6



H3 : Φ [1.37] Splined shaft, 6 – [1.37] x [1.11] x [.34]
 Φ 34.85 Splined shaft, 6–34.85 x 28.15 x 8.64



H51 : Φ [.99] Splined shaft, 6 – [.99] x [.84] x [.24]
 Φ 25.3 Splined shaft, 6–25.3 x 21.4 x 6.2

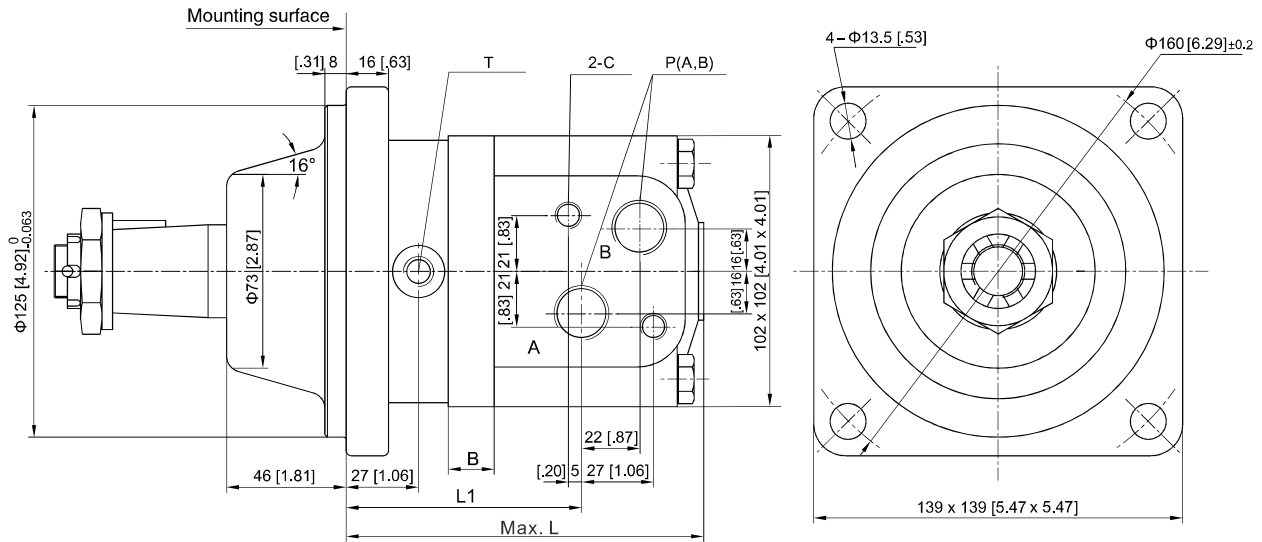


PHD3Y



DIMENSIONS AND MOUNTING

PHD3WY



	PHD3WY 80	PHD3WY 100	PHD3WY 125	PHD3WY 160	PHD3WY 200	PHD3WY 250	PHD3WY 315	PHD3WY 400	PHD3WY 500
L	127.5 [5.02]	131 [5.16]	135.5 [5.33]	141.5 [5.57]	148.5 [5.85]	157.5 [6.20]	169.5 [6.67]	183.5 [7.22]	196.5 [7.74]
L1	83 [3.27]	86.5 [3.40]	91 [3.58]	97 [3.82]	104 [4.09]	113 [4.45]	125 [4.92]	139 [5.47]	152 [5.98]
B	11 [.43]	14.5 [.57]	19 [.75]	25 [.98]	32 [1.26]	41 [1.61]	53 [2.08]	67 [2.64]	80 [3.15]

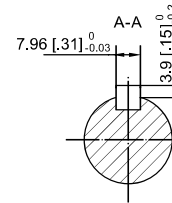
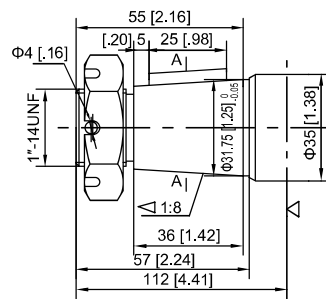
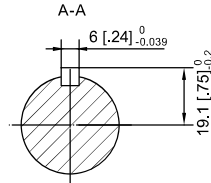
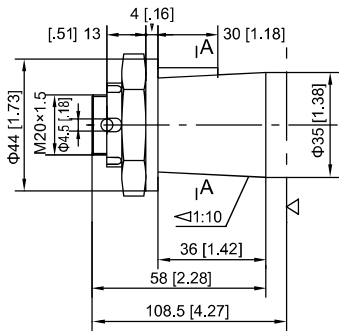
Port Codes	Ports (A,B)	Mounting Thread (C)	Drain Connection (T)
Y	G1/2 (15)	M10 (12)	G1/4 (12)
Y5	7/8-14UNF (15)	—	7/16-20UNF (12)

Note:P(A、B)---Ports, C---Mounting Thread (—Indicates no this thread), T---Drain connettion

DIMENSIONS AND MOUNTING

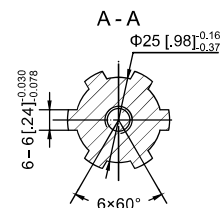
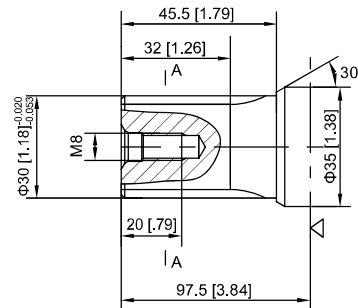
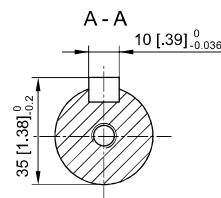
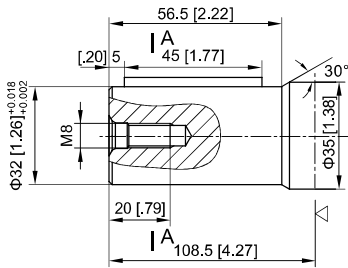
Z : Φ [1.38] Tapered shaft, taper 1:10, parallel key [.24] x [.24] x [1.18]
 Φ 35 Tapered shaft, taper 1:10, parallel key 6 x 6 x 30

Z2 : Φ [1.25] Tapered shaft, taper 1:8, parallel key [.31] x [.31] x [.98]
 Φ 31.75 Tapered shaft, taper 1:8, parallel key 7.96 x 7.96 x 25

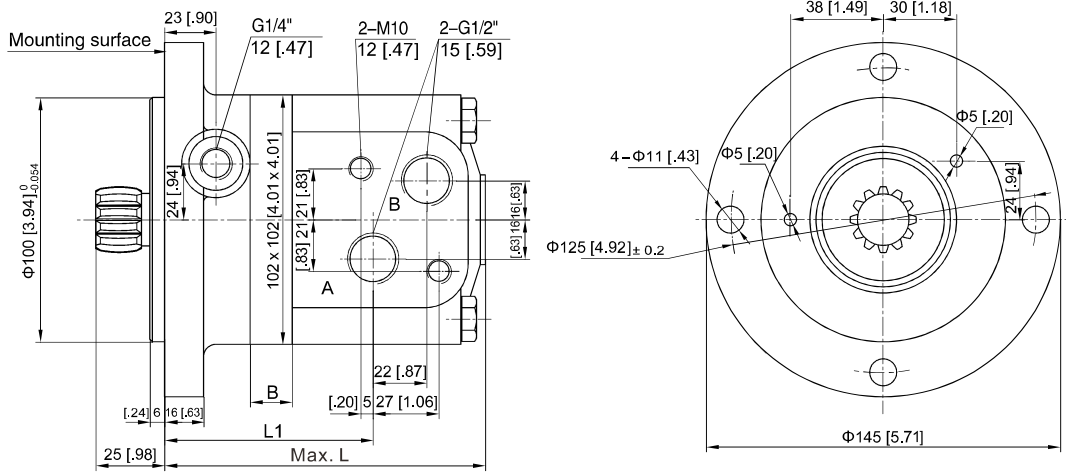


P10 : Φ [1.26] Cylindrical shaft, parallel key [.39] x [.31] x [1.77]
 Φ 32 Cylindrical shaft, parallel key 10 x 8 x 45

H1 : Φ [1.18] Splined shaft, 6 – [1.18] x [.98] x [.24]
 Φ 30 Splined shaft, 6 – 30 x 25 x 6

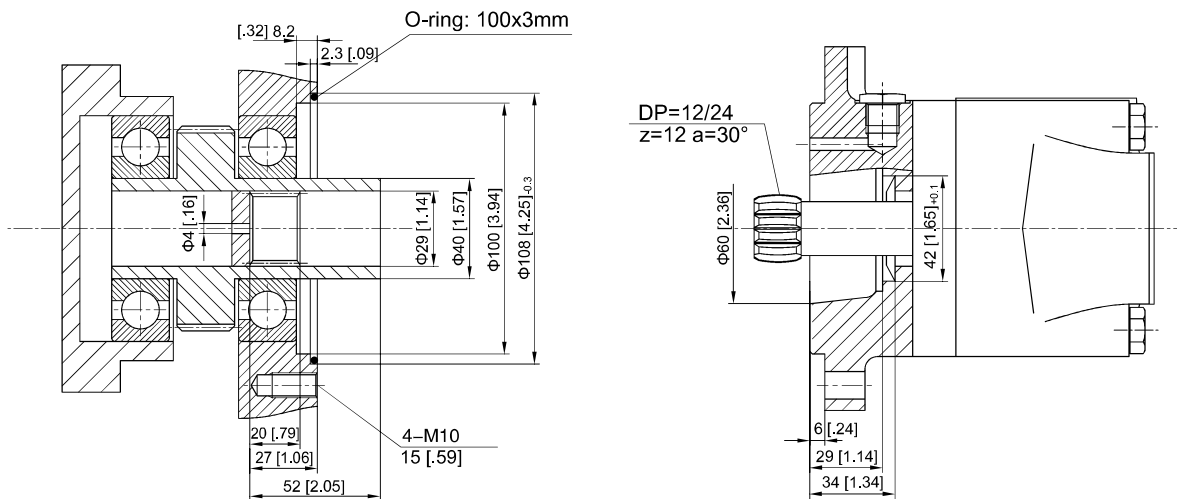


PHD3WY

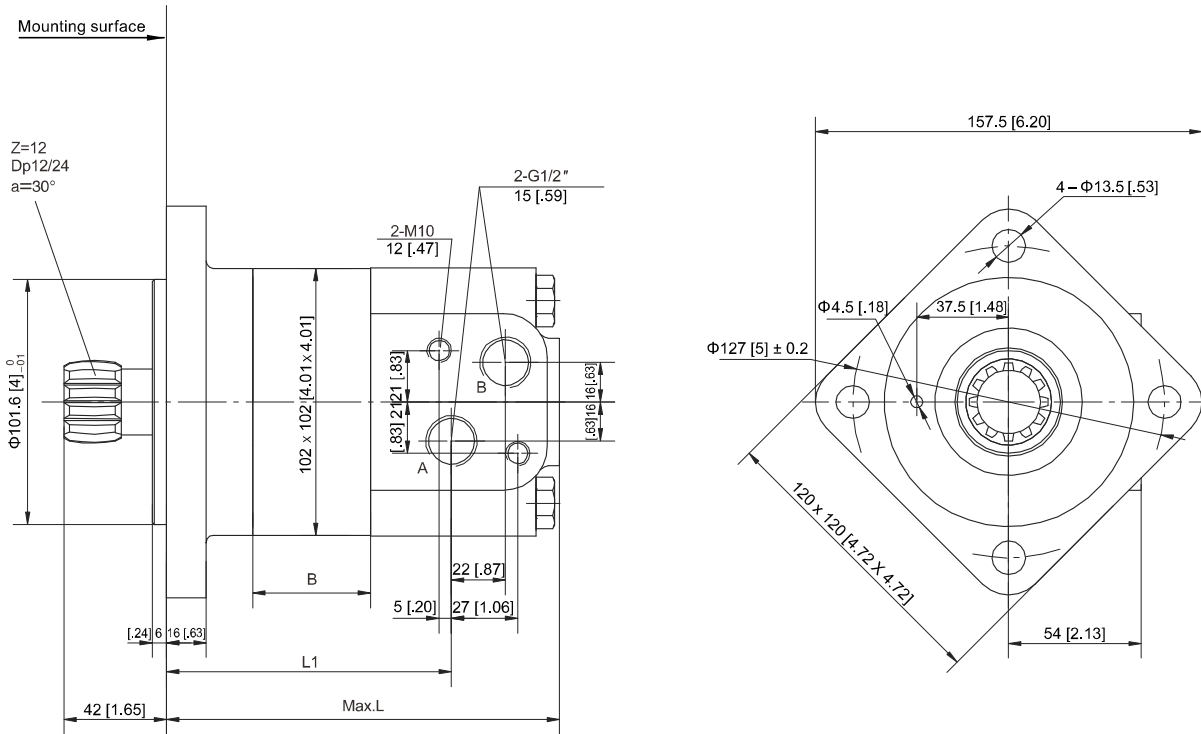


	PHD3SY 80	PHD3SY 100	PHD3SY 125	PHD3SY 160	PHD3SY 200	PHD3SY 250	PHD3SY 315	PHD3SY 400	PHD3SY 500
L	124 [4.88]	127.5 [5.02]	132 [5.19]	138 [5.43]	145 [5.71]	154 [6.06]	166 [6.54]	180 [7.09]	193 [7.59]
L1	79.5 [3.13]	83 [3.27]	87.5 [3.44]	93.5 [3.68]	100.5 [3.96]	109.5 [4.31]	121.5 [4.78]	135.5 [5.33]	148.5 [5.85]
B	11 [.43]	14.5 [.57]	19 [.75]	25 [.98]	32 [1.26]	41 [1.61]	53 [2.09]	67 [2.64]	80 [3.15]

Component Dimensions



DIMENSIONS AND MOUNTING



PHD3S3Y

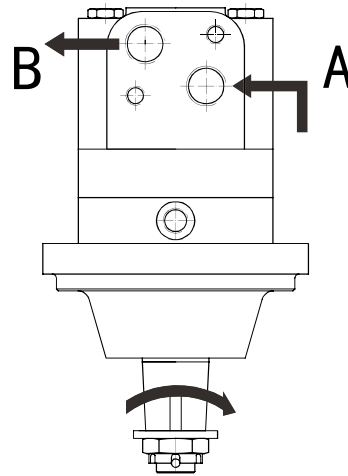
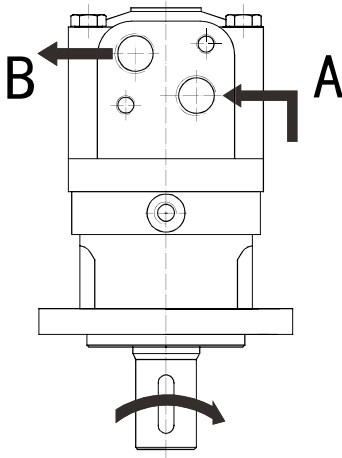
	PHD3S3Y 80	PHD3S3Y 100	PHD3S3Y 125	PHD3S3Y 160	PHD3S3Y 200	PHD3S3Y 250	PHD3S3Y 315	PHD3S3Y 400	PHD3S3Y 500
L	124 [4.88]	127.5 [5.02]	132 [5.19]	138 [5.43]	145 [5.71]	154 [6.06]	166 [6.53]	180 [7.09]	193 [7.59]
L1	79.5 [3.13]	83 [3.27]	87.5 [3.44]	93.5 [3.68]	100.5 [3.96]	109.5 [4.31]	121.5 [4.78]	135.5 [5.33]	148.5 [5.85]
B	11 [0.43]	14.5 [0.57]	19 [0.75]	25 [0.98]	32 [1.26]	41 [1.61]	53 [2.09]	67 [2.64]	80 [3.15]



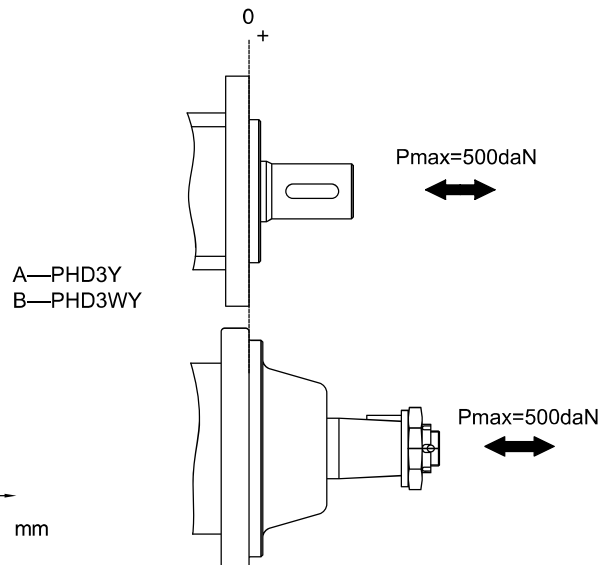
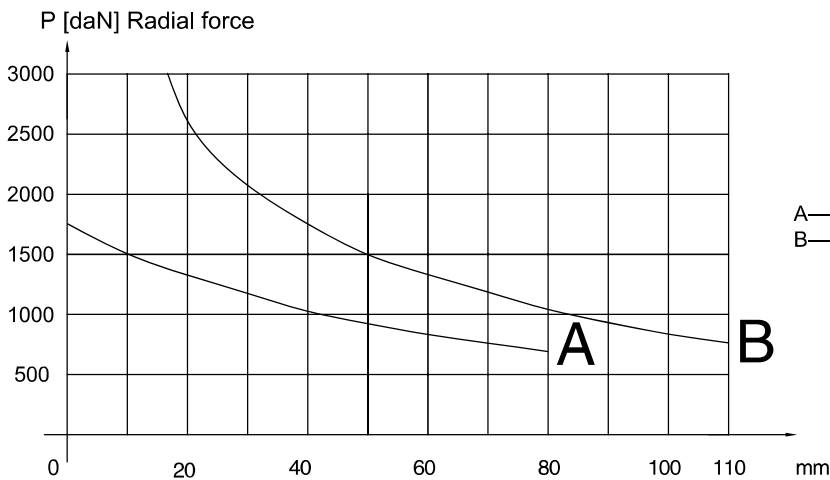
PHD3Y SERIES MOTOR

Direction of shaft rotation: Standard

When facing shaft end of motor, shaft to rotate:
 Clockwise when port "A" is pressurized.
 Counter-clockwise port "B" is pressurized.



PERMISSIBLE SHAFT LOADS





ORDERING INFORMATION

1	2	3	4	5	6	7
PHD3Y	—				—	—

Pos.1	2	3		4	5		6		7				
					Code	Ports							
Series	Disp	Shaft Options		Flange		Ports(A,B)(deep)	Drain port T(deep)	Special features		Rotation direction			
PHD3Y	80	P1	Φ[.98] Cylindrical shaft, parallel key [.31] x [.27] x [1.26] Φ25 Cylindrical shaft, parallel key 8 x 7 x 32		A1	4 – Φ[.53] Square flange, pilot Φ[3.25] 4–Φ 13.5 Square flange, pilot Φ82.5	Y	G1/2(15)	G1/4(12)	Omit	Standard	Omit	Standard
	100	P3	Φ[1] Cylindrical shaft, parallel key [.25] x [.25] x [1.26] Φ25.4 Cylindrical shaft, parallel key 6.35 x 6.35 x 32				Y1	M18 x 1.5(15)	M14 x 1.5(12)				
	125	P5	Φ[1.25] Cylindrical shaft, parallel key [.31] x [.31] x [1.26] Φ31.75 Cylindrical shaft, parallel key 7.96 x 7.96 x 32		A2	2 – Φ[.53] Oval flange, pilot Φ[3.25] 2–Φ 13.5 Oval flange, pilot Φ82.5	Y2	M22 x 1.5(15)	M14 x 1.5(12)				
	160		Φ[1.26] Cylindrical shaft, parallel key [.39] x [.31] x [1.77] Φ32 Cylindrical shaft, parallel key 10 x 8 x 45		A3	4 – Φ[.53] Square flange, pilot Φ[3.94] 4–Φ 13.5 Square flange, pilot Φ 100	Y3	M20 x 1.5(15)	M14 x 1.5(12)				
	200	H1	Φ[1.18] Splined shaft, 6 – [1.18] x [.98] x [.24] Φ 30 Splined shaft, 6–30 x 25 x 6		A4	4 – Φ[.53] Oval flange, pilot Φ[3.25] 4–Φ 13.5 Oval flange, pilot Φ82.5	Y5	7/8–14UNF(15)	7/16–20UNF(12)				
	250	H3	Φ[1.37] Splined shaft, 6 – [1.37] x [1.11] x [.34] Φ 34.85 Splined shaft, 6–34.85 x 28.15 x 8.64				Y8	1/2NPT(15)	1/4(12)				
	315	H51	Φ[.99] Splined shaft, 6 – [.99] x [.84] x [.24] Φ25.3 Splined shaft, 6–25.3 x 21.4 x 6.2				Y10	G1/2(15)	G1/4(12)				
	400												
500													



ORDERING INFORMATION

1	2	3	4	5	6	7
PHD3WY	—				—	—

Pos.1	2	3		4		5		6		7		
Series	Disp	Shaft Options		Flange		Code	Ports		Special features		Rotation direction	
							Ports(A,B)(deep)	Drain port T(deep)				
PHD3WY	80	P10	Φ[1.26] Cylindrical shaft, parallel key [.39] x [.31] x [1.77]		A	Y	G1/2(15)	M14 x 1.5(12)	Omit	Standard	Omit	Standard
	100		Φ32 Cylindrical shaft, parallel key 10 x 8 x 45									
	125	H1	Φ[1.18] Splined shaft, 6 – [1.18] x [.98] x [.24]									
	160		Φ30 Splined shaft, 6–30 x 25 x 6									
200	Z	Φ[1.38] Tapered shaft, taper 1:10, parallel key [.24] x [.24] x [1.18]		Y5	7/8–14UNF(15)	7/16–20UNF(12)	L	Opposite				
250	Φ35 Tapered shaft, taper1:10, parallel key 6 x 6 x 30											
315	Z2	Φ[1.25] Tapered shaft, taper 1:8, parallel key [.31] x [.31] x [.98]										
400		Φ31.75 Tapered shaft, taper1:8, parallel key 7.96 x 7.96 x 25										
500												

1	2	3
PHD3SY	—	—

1	2	3
PHD3S3Y	—	—

Pos.1	2	3	
Series	Disp	Special features	
PHD3SY	80	Omit	Standard
	100		
	125	Standard	
	160		
	200	Standard	
	250		
	315	Standard	
	400		
500	Standard		

Pos.1	2	3	
Series	Disp	Special features	
PHD3S3Y	80	Omit	Standard
	100		
	125	Standard	
	160		
	200	Standard	
	250		
	315	Standard	
	400		
500	Standard		